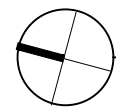


#220

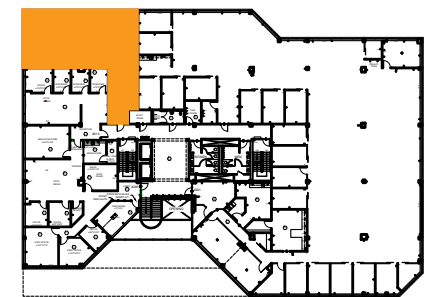


Suite # 220
 ECHELLE: 1/8" = 1'-0"
 (11"x17")

1,827 RSF

*Note That All Dimensions Are Approximate and subject to change without notice / Veuillez noter que les dimensions indiquées sont approximatives et peuvent changer sans avis

Legend:



KEY PLAN

no.	issue	date

Title: **SECOND FLOOR**


Scale: N.T.S.

Drawn By: _____

Date: _____

Project Name and Location/
**77 Hartland Street,
 Hartford, CT**

Suite/Room #
220



1004 East Brooks Road
 Memphis, TN 38116
 Tel: 1-888-OLYMBEC
 WWW.OLYMBEC.COM