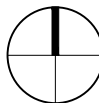
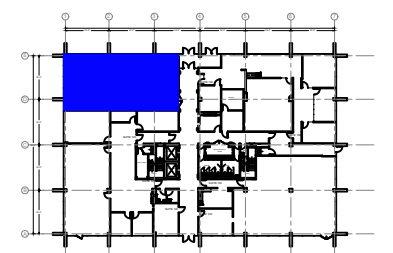


SUITE 110


Suite #110 **2,027 RSF**
 SCALE: N.T.S.
 (11x17)

Legend:



Key Plan

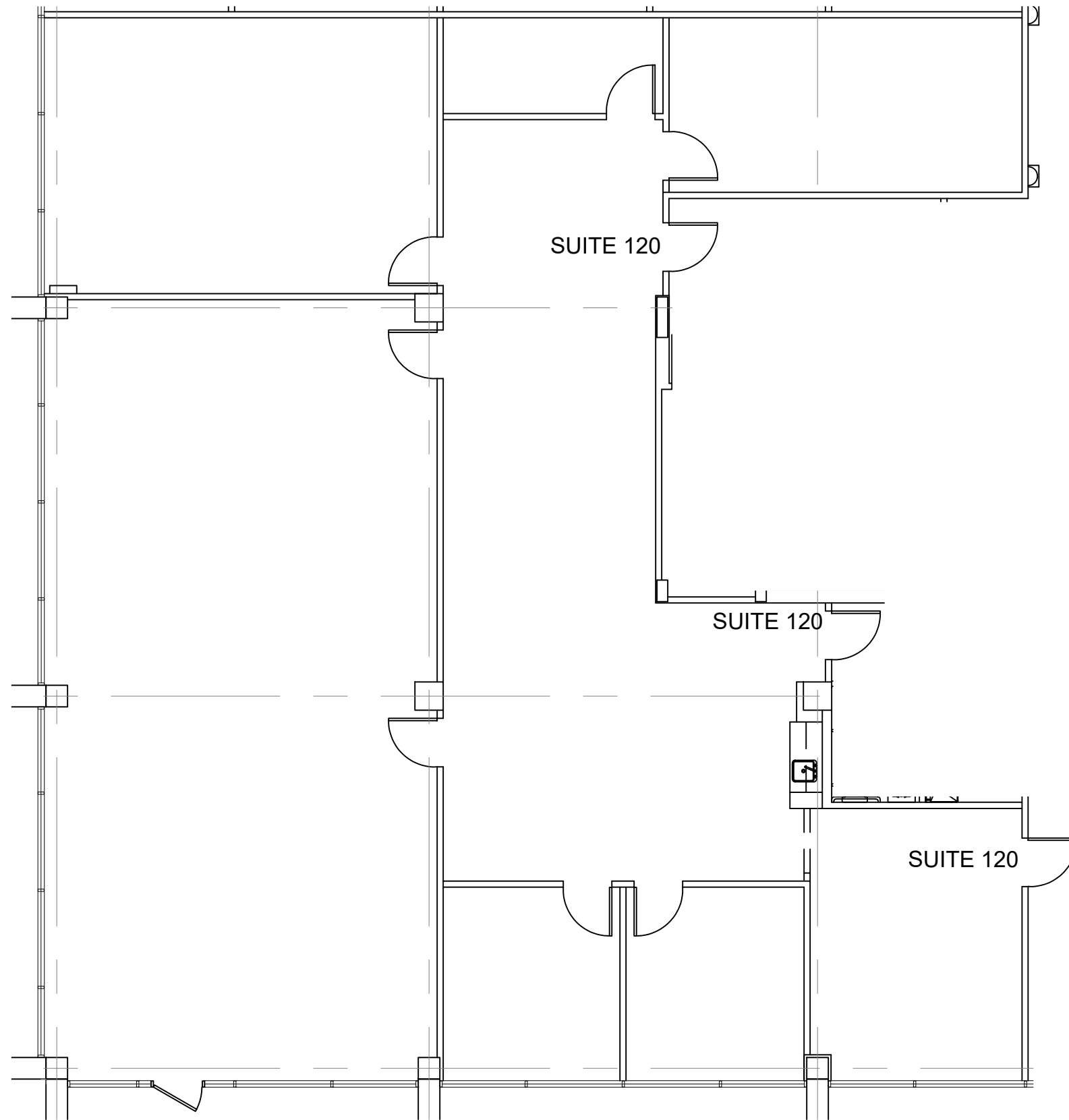
no.	issue	date
Title:		
Ground Floor Plan		
Scale: N.T.S.		
Drawn By:		
Date:		
Project Name and Location:		
1991 Corporate Avenue Memphis, TN 38132		
Suite/Room #		
Suite #110		




**OLYMBEC
USA**
 1004 East Brooks Road
 Memphis, TN 38116
 Tel: 1-888-OLYMBEC
 WWW.OLYMBEC.COM

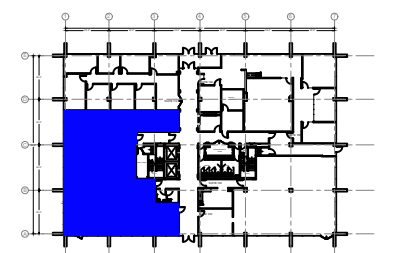
G:\Cad Files\Corporate Avenue 1991, Memphis, TN\Corporate Avenue 1991, Memphis, TN.dwg, 3/25/2021 10:05:12 AM, Icaisile, Olymbec, Olymbec

*Note That All Dimensions Are Approximate and subject to change without notice




Suite #120 **3,670 RSF**
 SCALE: 1/8" = 1'-0"
 (11x17)

Legend:



Key Plan

no.	issue	date

Title: **Ground Floor Plan**

Scale: 1/8" = 1'-0"

Drawn By: _____

Date: _____

Project Name and Location:
1991 Corporate Avenue
Memphis, TN 38132

Suite/Room #
Suite #120


 1004 East Brooks Road
 Memphis, TN 38116
 Tel: 1-888-OLYMBEC
 WWW.OLYMBEC.COM

G:\Cad Files\Corporate Avenue 1991, Memphis, TN\Corporate Avenue 1991, Memphis, TN.dwg, 3/25/2021 10:05:13 AM, Icaris, Olymbec, Olymbec

*Note That All Dimensions Are Approximate and subject to change without notice