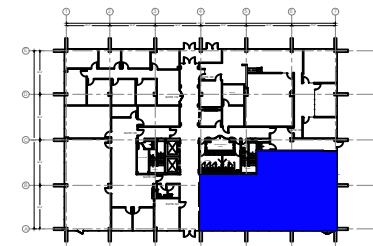


Suite #130
 SCALE: 1/8" = 1'-0"
 (11x17)

3,000 RSF

Legend:



Key Plan

no.	issue	date

Title:
Ground Floor Plan

Scale: 1/8" = 1'-0"

Drawn By:

Date:

Project Name and Location:

1991 Corporate Avenue
 Memphis, TN 38132

Suite/Room #
Suite #130



1004 East Brooks Road
 Memphis, TN 38116
 Tel: 1-888-OLYMBEC
 WWW.OLYMBEC.COM

*Note That All Dimensions Are Approximate and subject to change without notice