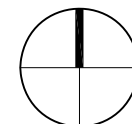
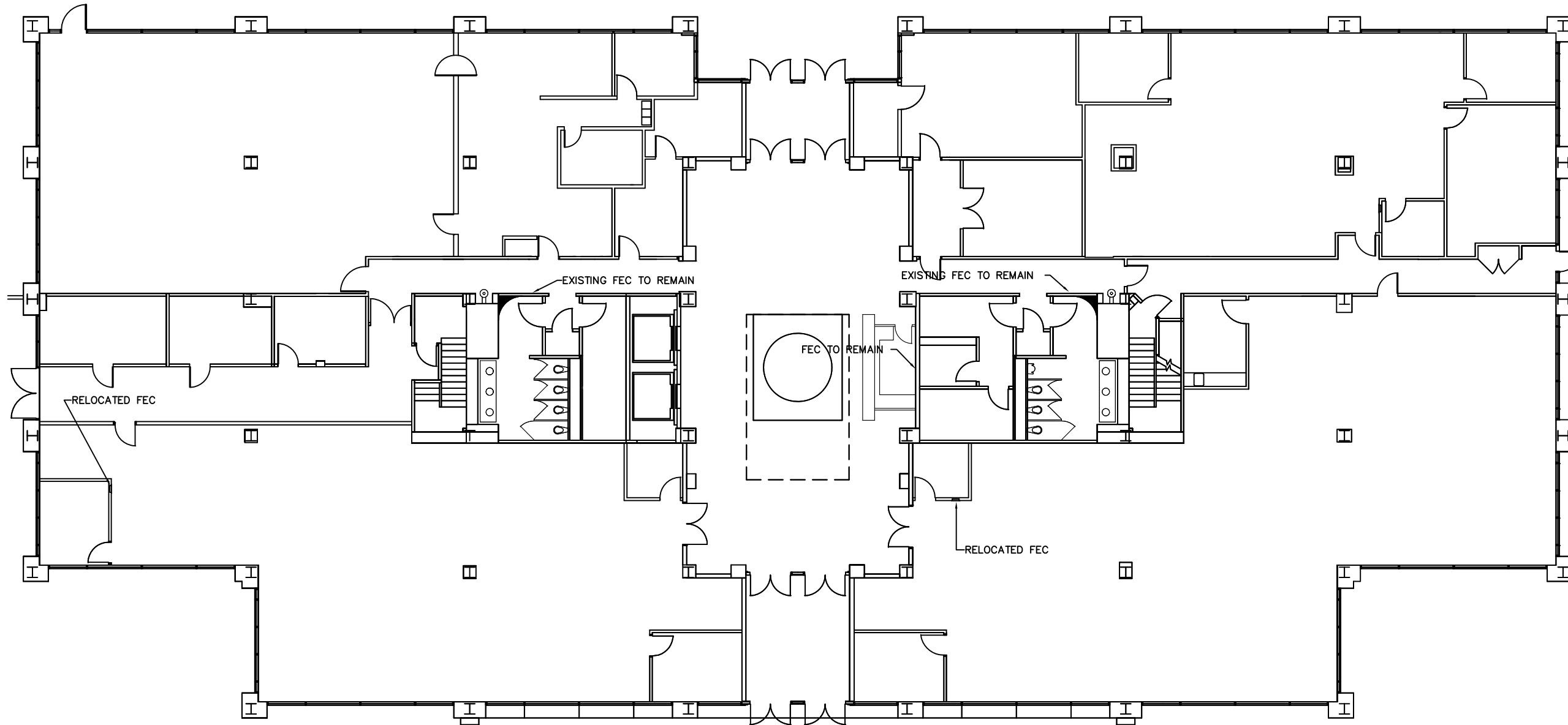


SSCAD Files\Corporate av. 2005 Corporate Plaza, Memphis, TN\2005- Floor 1 - Olymbec.dwg, 5/26/2017 11:40:28 AM, bhenovits



FIRST FLOOR LAYOUT

SCALE: NTS (11X17)

19,888 RSF

*Note That All Dimensions Are Approximate and subject to change without notice

Legend:

no.	issue	date

Title: **FIRST FLOOR PLAN**

Scale: N.T.S.

Drawn By:

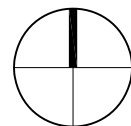
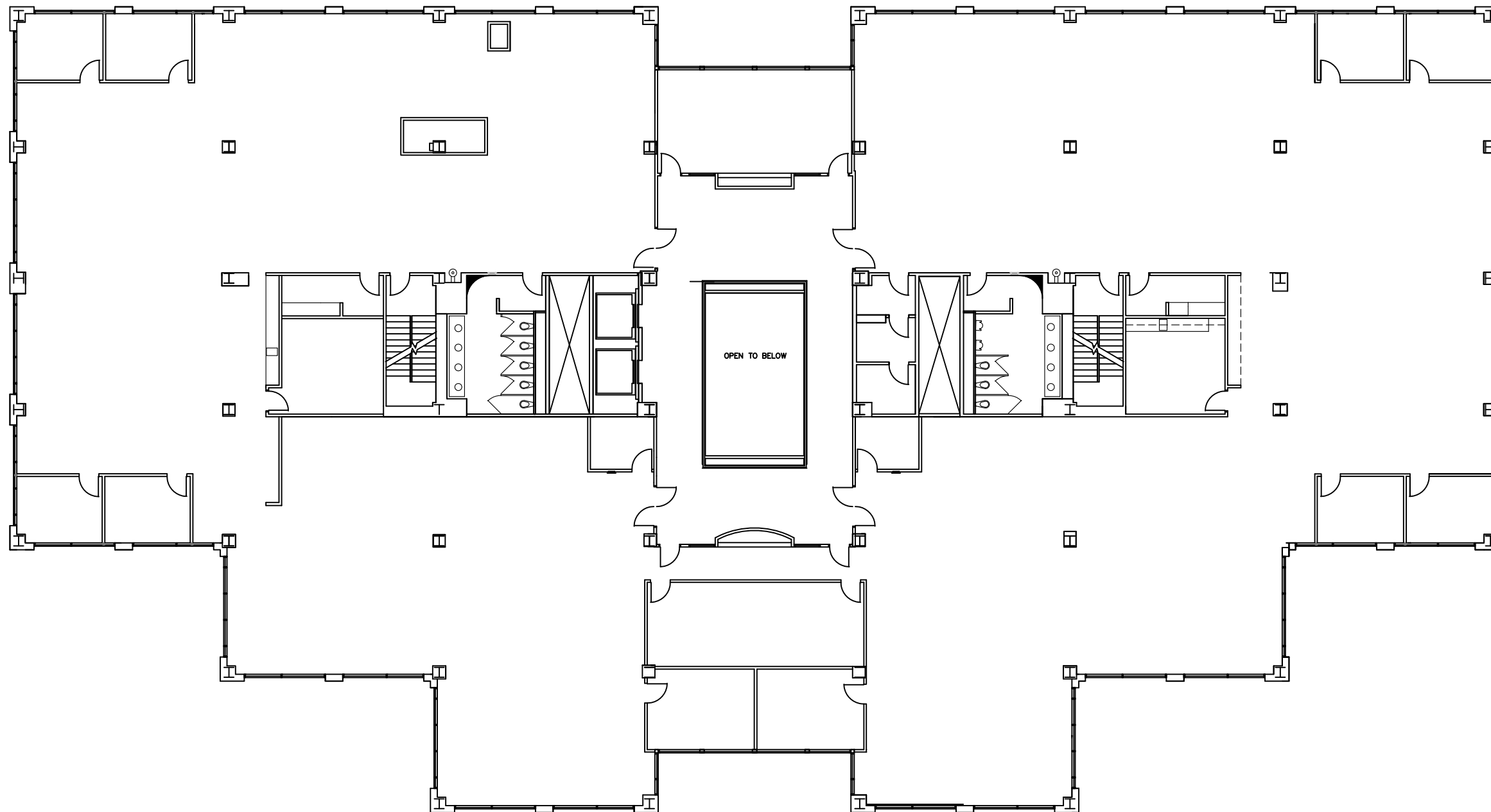
Date: 03-07-2016

Project Name and Location:
**2005 CORPORATE
 MEMPHIS TN**

Suite/Room #



80 Monroe Avenue,
 Suite L-7
 Memphis, TN, 38103
 Tel: 1-888-OLYMBEC
 WWW.OLYMBEC.COM



SECOND FLOOR LAYOUT

SCALE: NTS (11X17)

21,534 RSF

Legend:

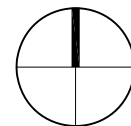
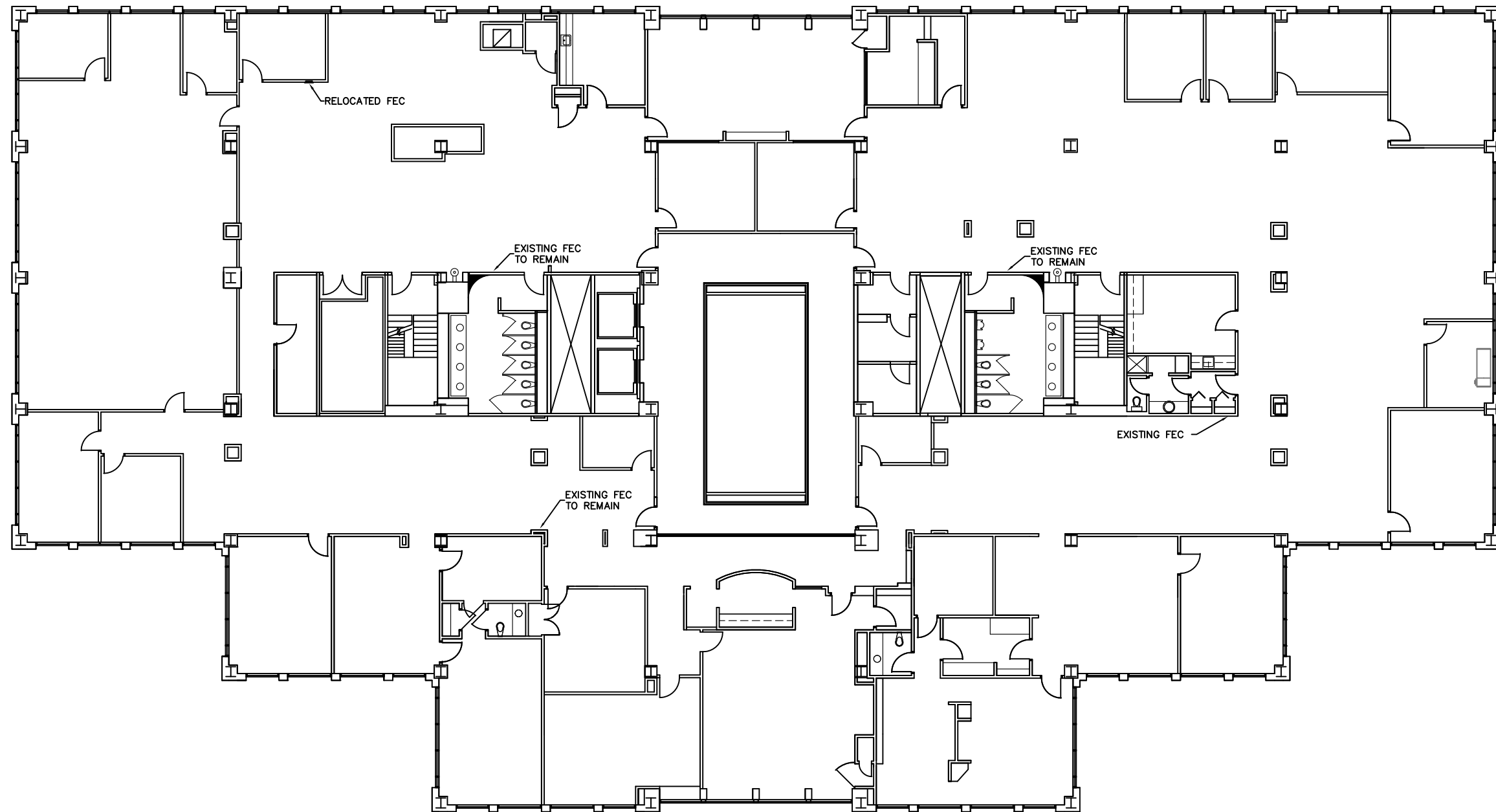
no.	issue	date

Title:
SECOND FLOOR PLAN

Scale: N.T.S.
 Drawn By:
 Date: 03-07-2016
 Project Name and Location:
**2005 CORPORATE
 MEMPHIS TN**
 Suite/Room #

80 Monroe Avenue,
 Suite L-7
 Memphis, TN, 38103
 Tel: 1-888-OLYMBEC
 WWW.OLYMBEC.COM

*Note That All Dimensions Are Approximate and subject to change without notice



THIRD FLOOR LAYOUT

SCALE: NTS (11X17)

21,911 RSF

Legend:

no.	issue	date

Title:

THIRD FLOOR PLAN

Scale: N.T.S.

Drawn By:

Date: 03-07-2016

Project Name and Location:

2005 CORPORATE

MEMPHIS TN

Suite/Room #



*Note That All Dimensions Are Approximate and subject to change without notice