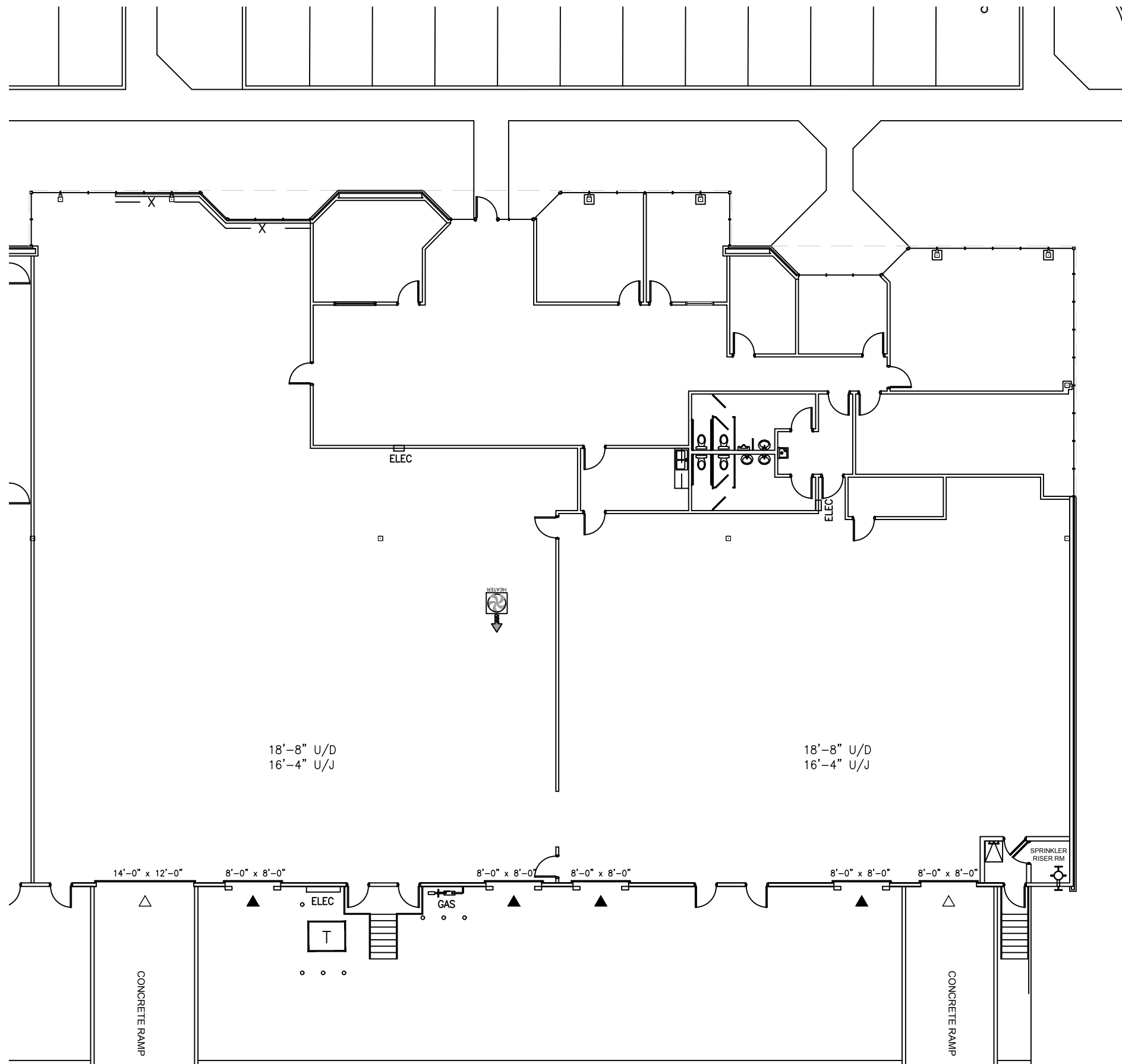
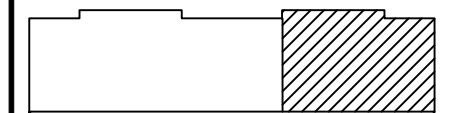


S:\Cad Files\Corporate Park Memphis, TN\Winchester Rd 4477, Memphis, TN.dwg, 11/18/2016 9:58:52 AM, Icarlisle



Legend:



Key Plan

no.	issue	date

Title:

Floor Plan

Scale: 1/16" = 1'-0"

Drawn By: LGC

Date:

Project Name and Location:

4477 Winchester Road  
Memphis, TN 38118

Suite/Room #

Suite #14



\*Note That All Dimensions Are Approximate and subject to change without notice