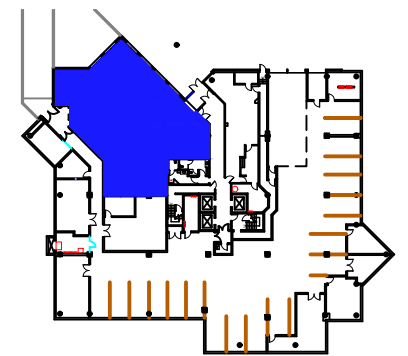


Legende/ Legend:



TRANS-CANADA
Plan Clé/
Key Plan

no.	révision/issue	date

Titre/Title :
Sous-sol/Basement

Échelle/Scale: N.T.S.
Dessiné par/ Drawn By:

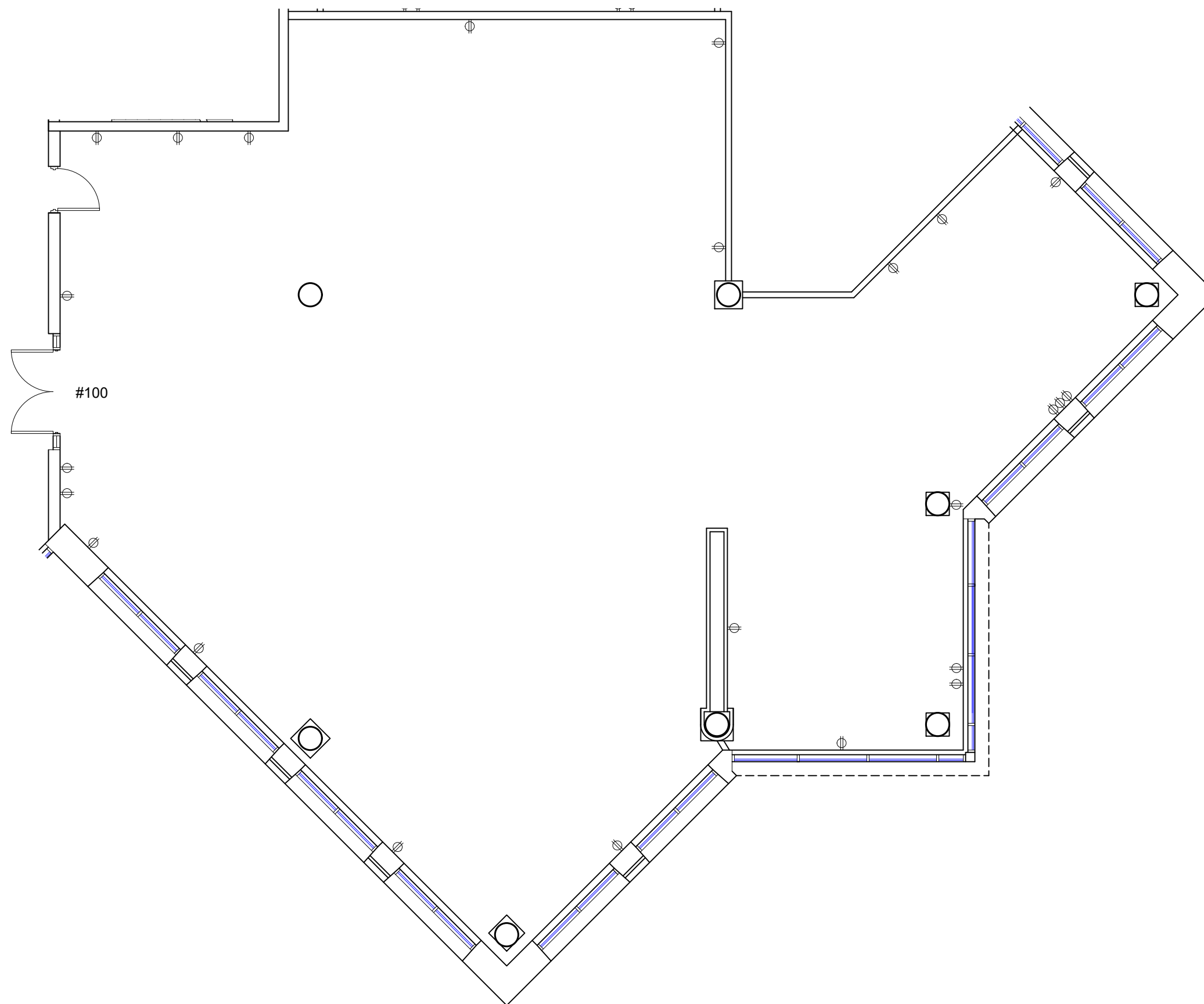
Date:

Nom et Localisation du Projet/
Project Name and Location:
**Trans-Canada 6505,
Ville St. Laurent, Qc**

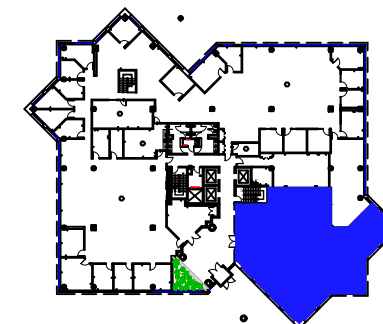
Suite/Room #
#30



*Veuillez noter que les dimensions indiquées sont approximatives et peuvent changer sans avis/ Note That All Dimensions Are Approximate and subject to change without notice



Legende/ Legend:



TRANS-CANADA
Plan Clé/
Key Plan

no.	révision/issue	date

Titre/Title :
RDC/Ground Floor

Échelle/Scale: N.T.S.
Dessiné par/ Drawn By:

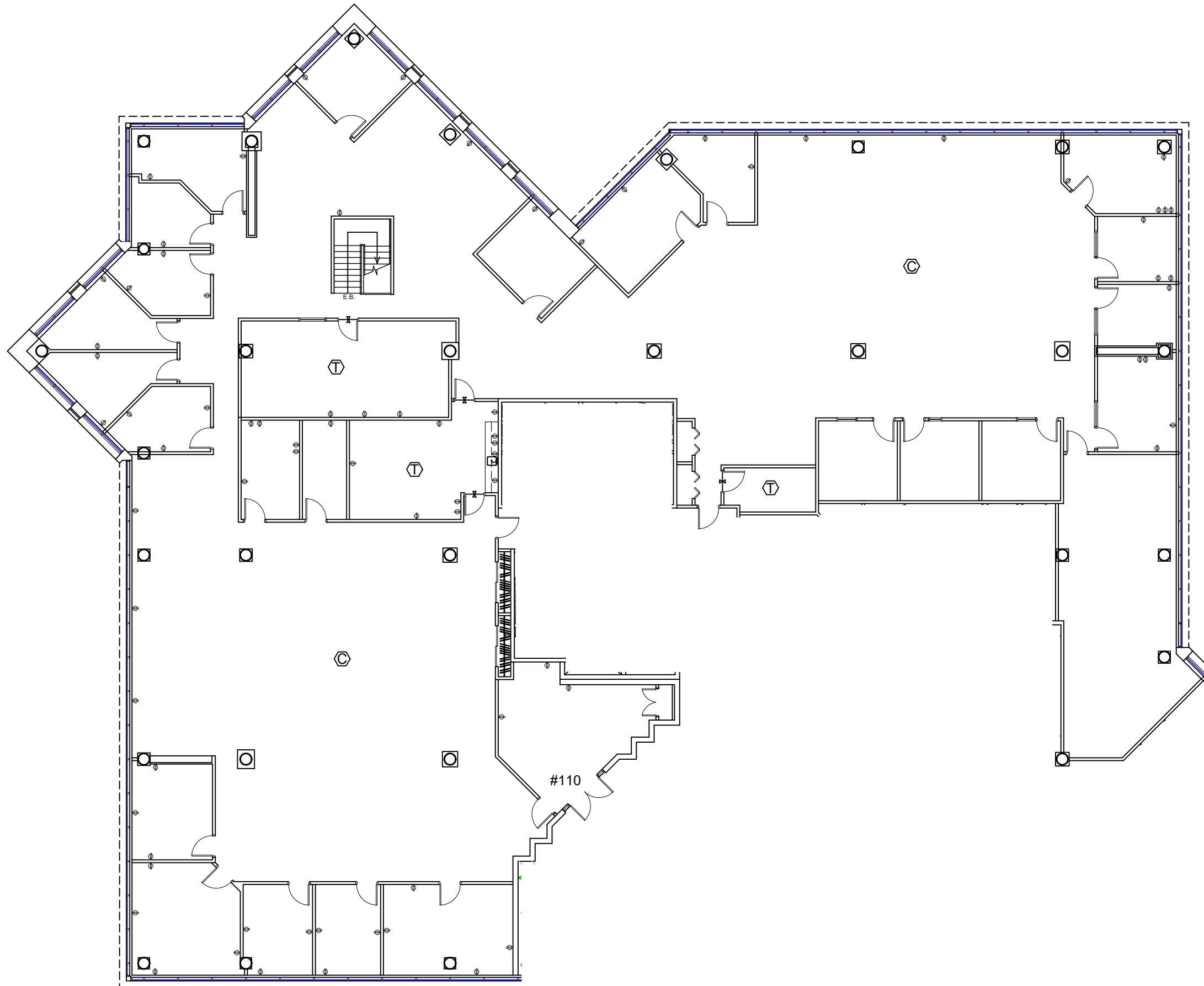
Date:

Nom et Localisation du Projet/
Project Name and Location:
**Trans-Canada 6505,
Ville St. Laurent, Qc**

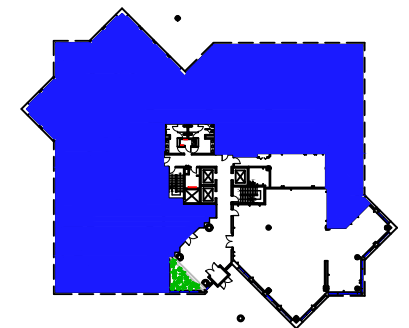
Suite/Room #
#100



*Veuillez noter que les dimensions indiquées sont approximatives et peuvent changer sans avis/ Note That All Dimensions Are Approximate and subject to change without notice



Legende/ Legend:



TRANS-CANADA
Plan Clé/
Key Plan

no.	révision/issue	date

Titre/Title :
RDC/Ground Floor

Échelle/Scale: N.T.S.
Dessiné par/ Drawn By:

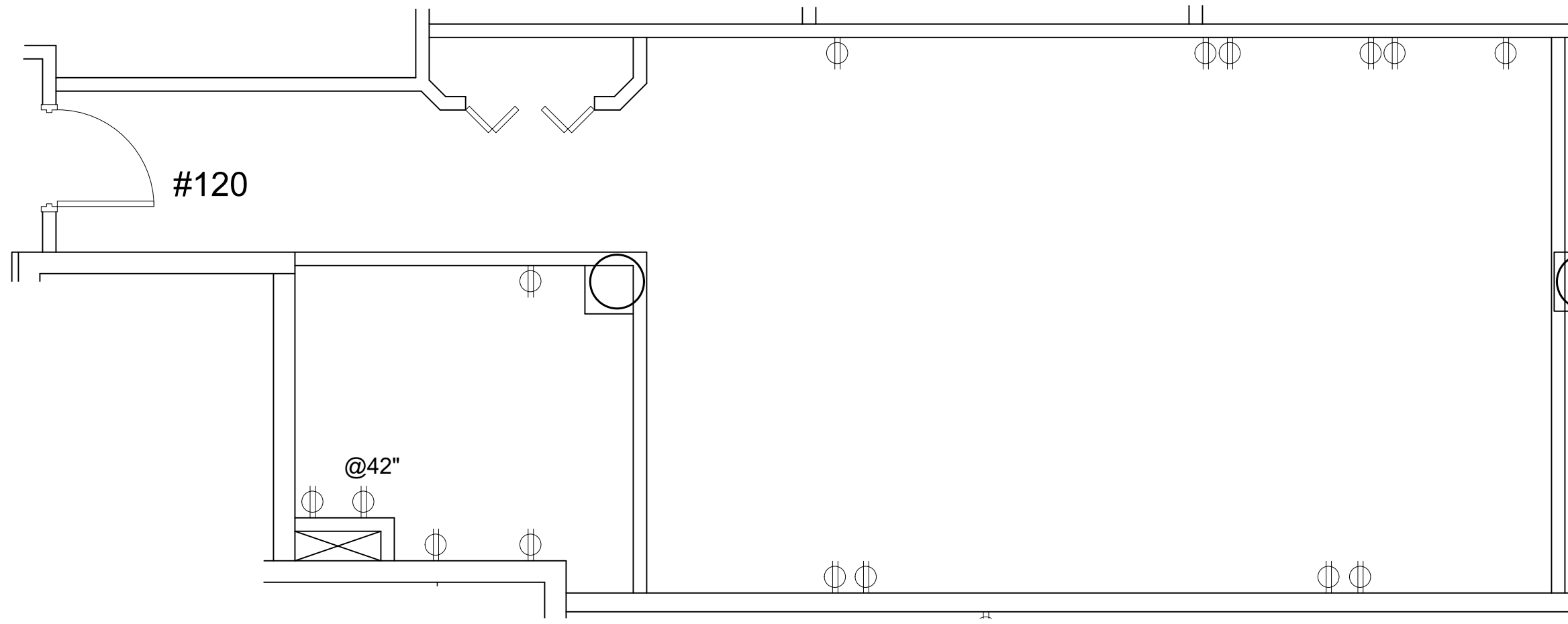
Date:
Nom et Localisation du Projet/
Project Name and Location:

**Trans-Canada 6505,
Ville St. Laurent, Qc**

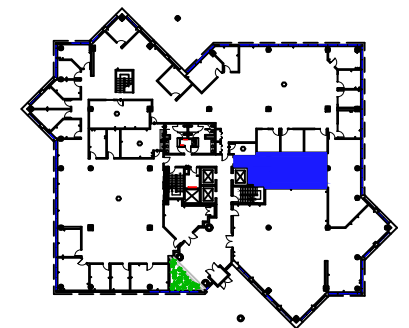
Suite/Room #
#110



*Veuillez noter que les dimensions indiquées sont approximatives et peuvent changer sans avis/ Note That All Dimensions Are Approximate and subject to change without notice



Legende/ Legend:



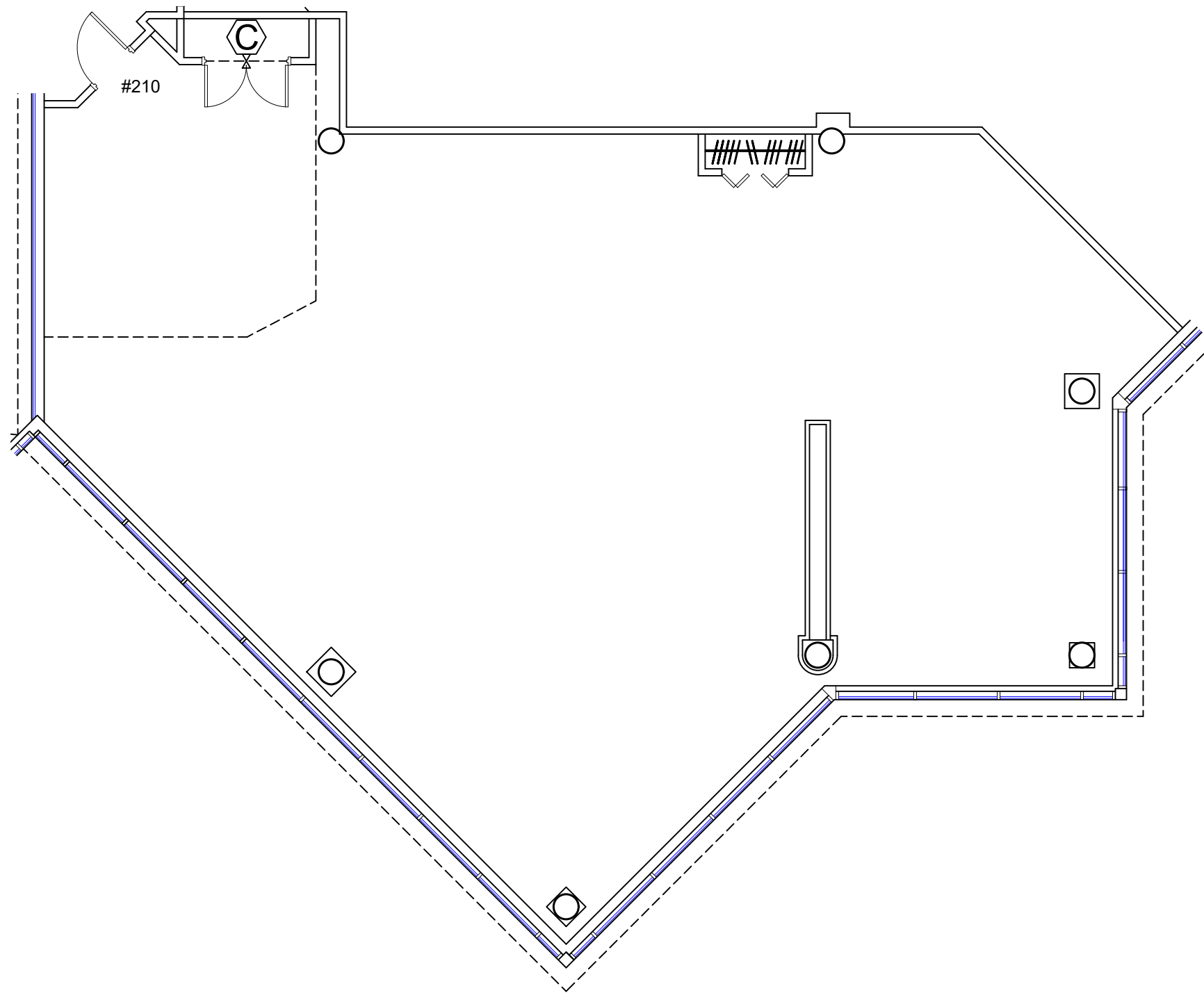
TRANS-CANADA
Plan Clé/
Key Plan

no.	révision/issue	date

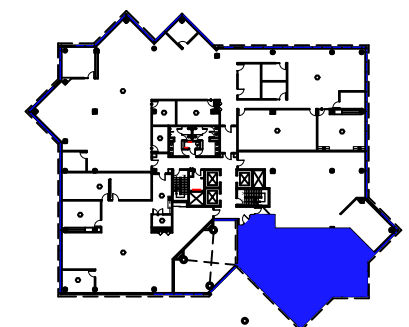
Titre/Title :
RDC/Ground Floor

Échelle/Scale: N.T.S.	<p>OLYMBEC 333 Décarie 5th floor, St. Laurent Quebec H4N 3M9 Tel: (514) 344-3334 WWW.OLYMBEC.COM</p>
Dessiné par/ Drawn By:	
Date:	
Nom et Localisation du Projet/ Project Name and Location: Trans-Canada 6505, Ville St. Laurent, Qc	
Suite/Room # #120	

*Veuillez noter que les dimensions indiquées sont approximatives et peuvent changer sans avis/ Note That All Dimensions Are Approximate and subject to change without notice



Legende/ Legend:



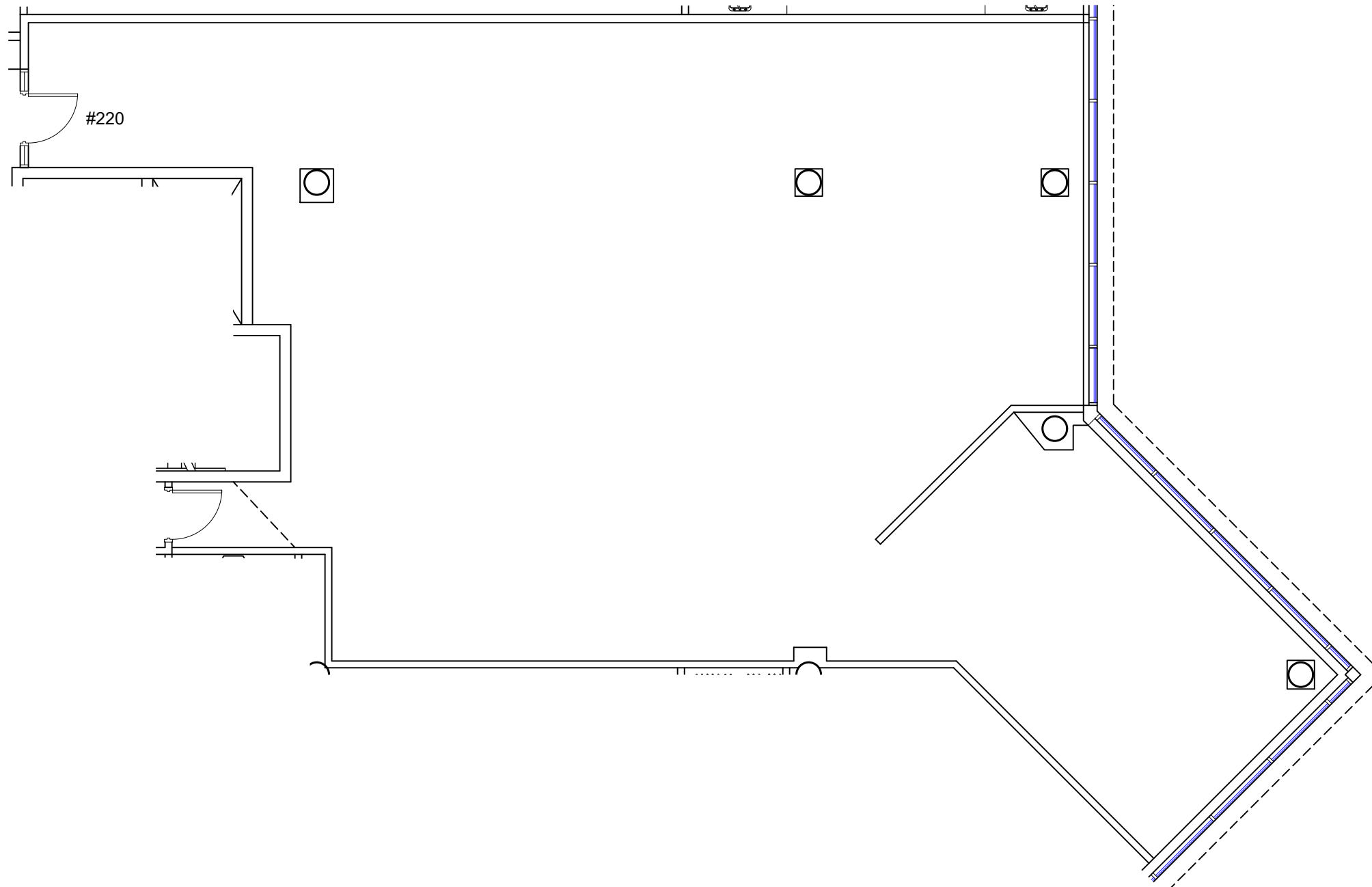
TRANS-CANADA
Plan Clé/
Key Plan

no.	révision/issue	date

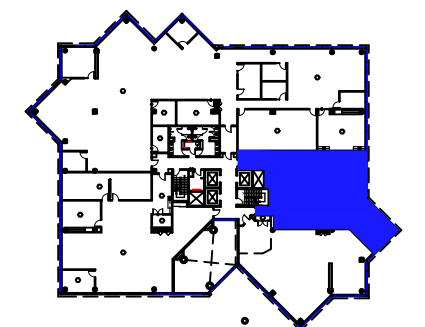
Titre/Title :
Deuxieme Etage/Second Floor

Échelle/Scale: N.T.S.		 OLYMBEC 333 Décarie 5th floor, St. Laurent Quebec H4N 3M9 Tel: (514) 344-3334 WWW.OLYMBEC.COM
Dessiné par/ Drawn By:		
Date:		
Nom et Localisation du Projet/ Project Name and Location: Trans-Canada 6505, Ville St. Laurent, Qc		
Suite/Room # #210		

*Veuillez noter que les dimensions indiquées sont approximatives et peuvent changer sans avis/ Note That All Dimensions Are Approximate and subject to change without notice



Legende/ Legend:



TRANS-CANADA
Plan Clé/
Key Plan

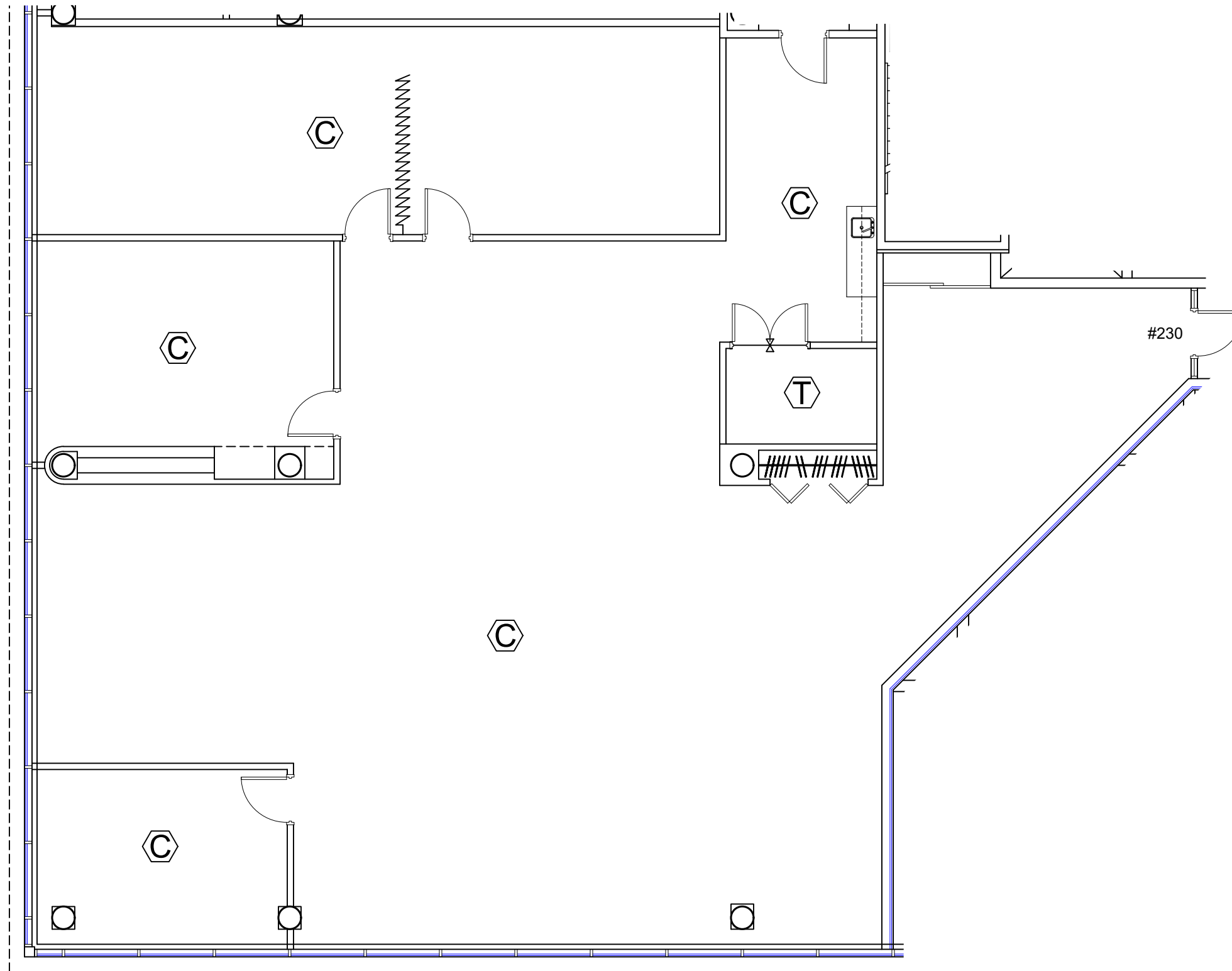
no.	révision/issue	date

Titre/Title :
Deuxieme Etage/Second Floor

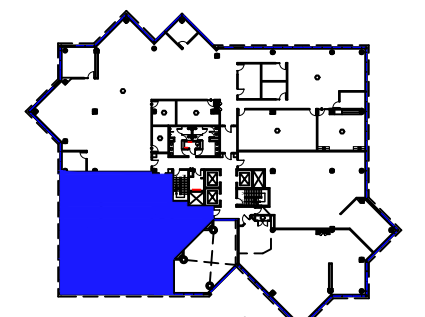
Échelle/Scale: N.T.S.
 Dessiné par/ Drawn By:
 Date:
 Nom et Localisation du Projet/
 Project Name and Location:
**Trans-Canada 6505,
 Ville St. Laurent, Qc**
 Suite/Room #
#220



*Veuillez noter que les dimensions indiquées sont approximatives et peuvent changer sans avis/ Note That All Dimensions Are Approximate and subject to change without notice



Legende/ Legend:



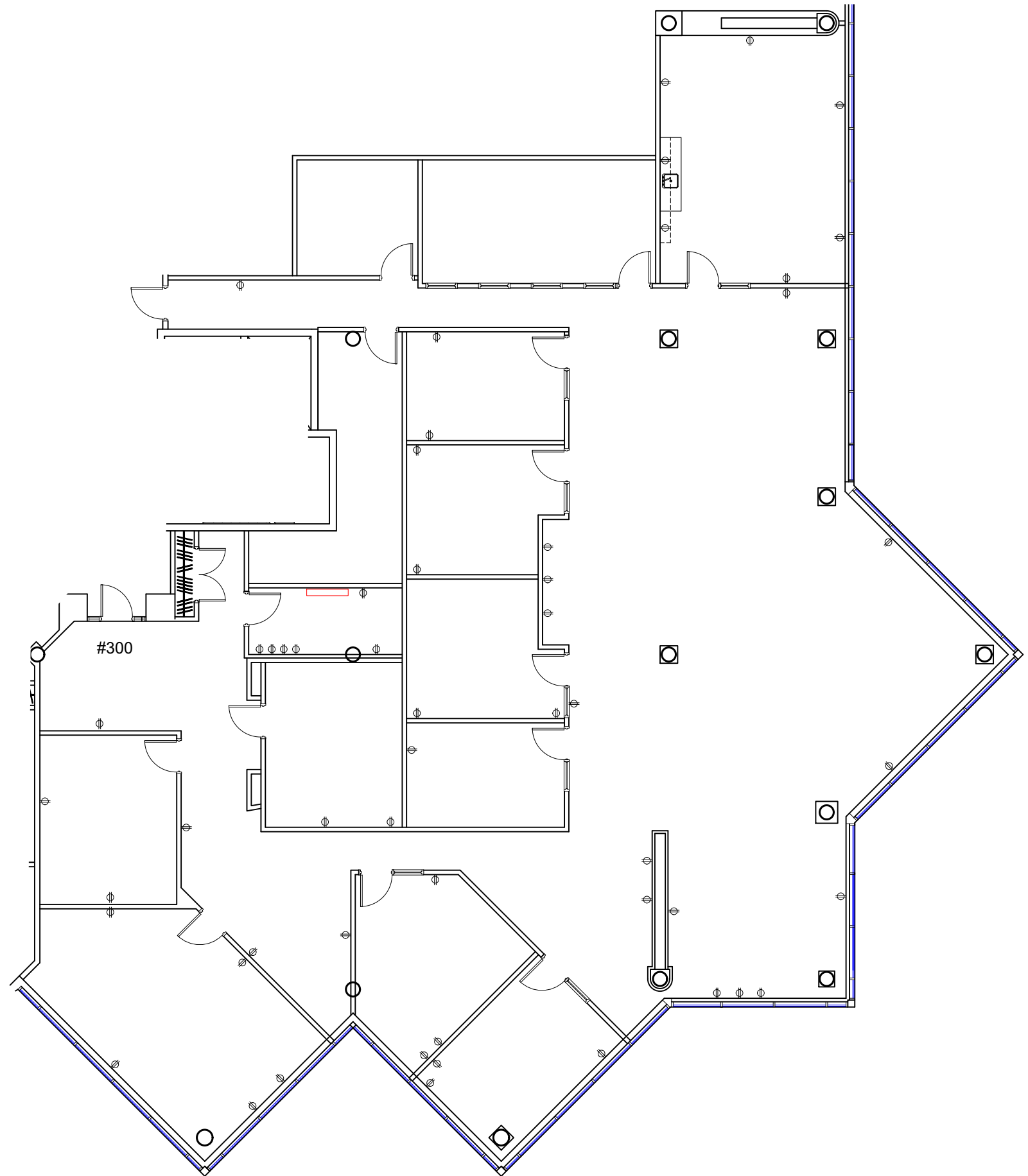
TRANS-CANADA
Plan Clé/
Key Plan

no.	révision/issue	date

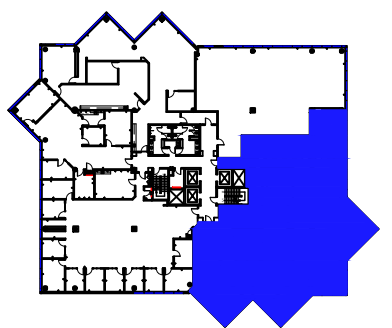
Titre/Title :
Deuxieme Etage/Second Floor

Échelle/Scale: N.T.S.		 OLYMBEC 333 Décarie 5th floor, St. Laurent Quebec H4N 3M9 Tel: (514) 344-3334 WWW.OLYMBEC.COM
Dessiné par/ Drawn By:		
Date:		
Nom et Localisation du Projet/ Project Name and Location: Trans-Canada 6505, Ville St. Laurent, Qc		
Suite/Room # #230		

*Veuillez noter que les dimensions indiquées sont approximatives et peuvent changer sans avis/ Note That All Dimensions Are Approximate and subject to change without notice



Legende/ Legend:



TRANS-CANADA
Plan Clé/
Key Plan

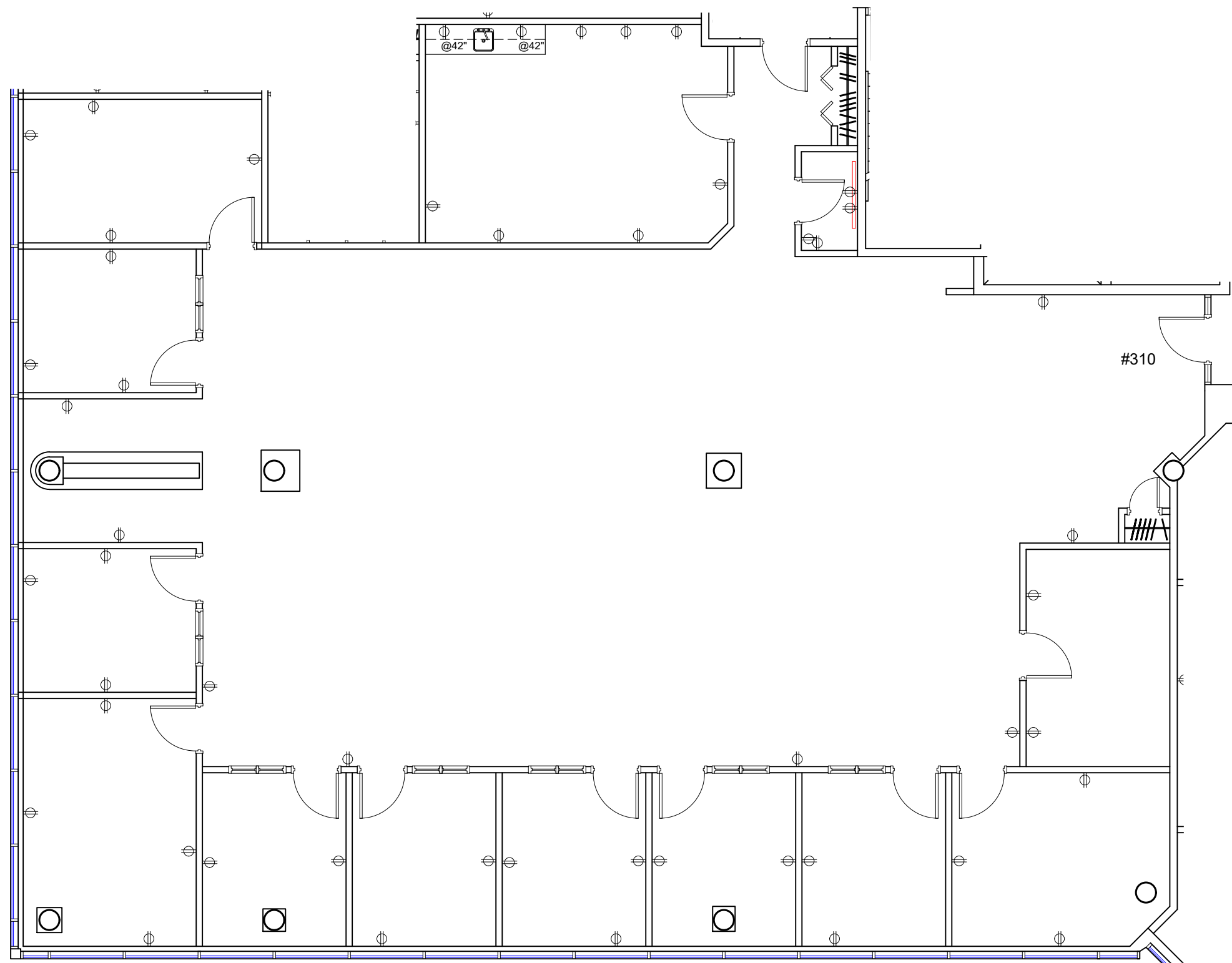
no.	révision/issue	date

Titre/Title :
Troisième Etage/Third Floor

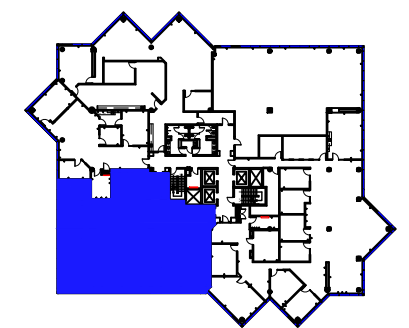
Échelle/Scale: N.T.S.
 Dessiné par/ Drawn By:
 Date:
 Nom et Localisation du Projet/
 Project Name and Location:
**Trans-Canada 6505,
 Ville St. Laurent, Qc**
 Suite/Room #
#300



*Veuillez noter que les dimensions indiquées sont approximatives et peuvent changer sans avis/ Note That All Dimensions Are Approximate and subject to change without notice



Legende/ Legend:



TRANS-CANADA
Plan Clé/
Key Plan

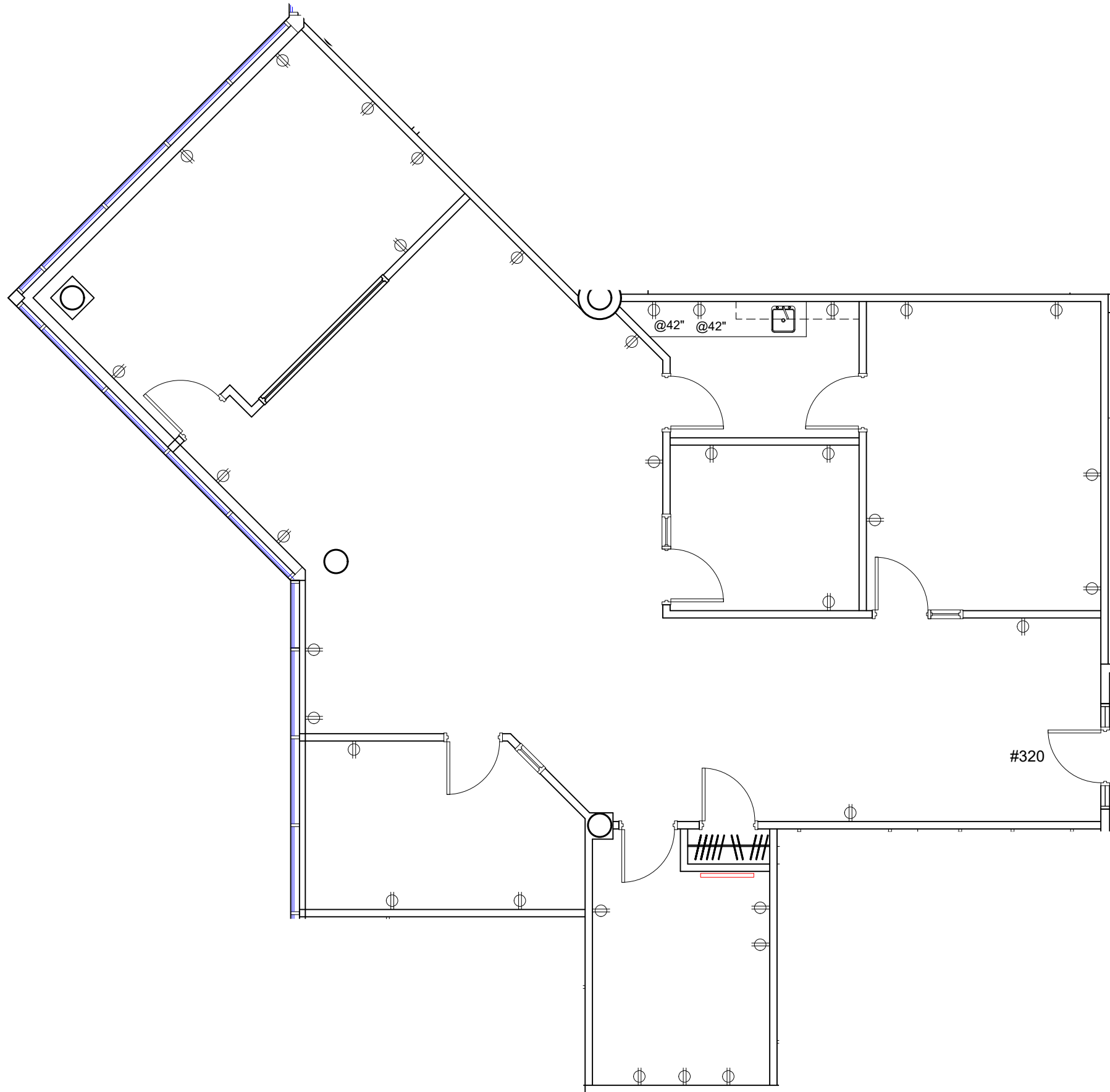
no.	révision/issue	date

Titre/Title :
Troisième Etage/Third Floor

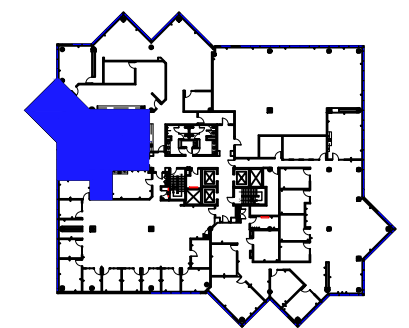
Échelle/Scale: N.T.S.
 Dessiné par/ Drawn By:
 Date:
 Nom et Localisation du Projet/
 Project Name and Location:
**Trans-Canada 6505,
 Ville St. Laurent, Qc**
 Suite/Room #
#310



*Veuillez noter que les dimensions indiquées sont approximatives et peuvent changer sans avis/ Note That All Dimensions Are Approximate and subject to change without notice



Legende/ Legend:



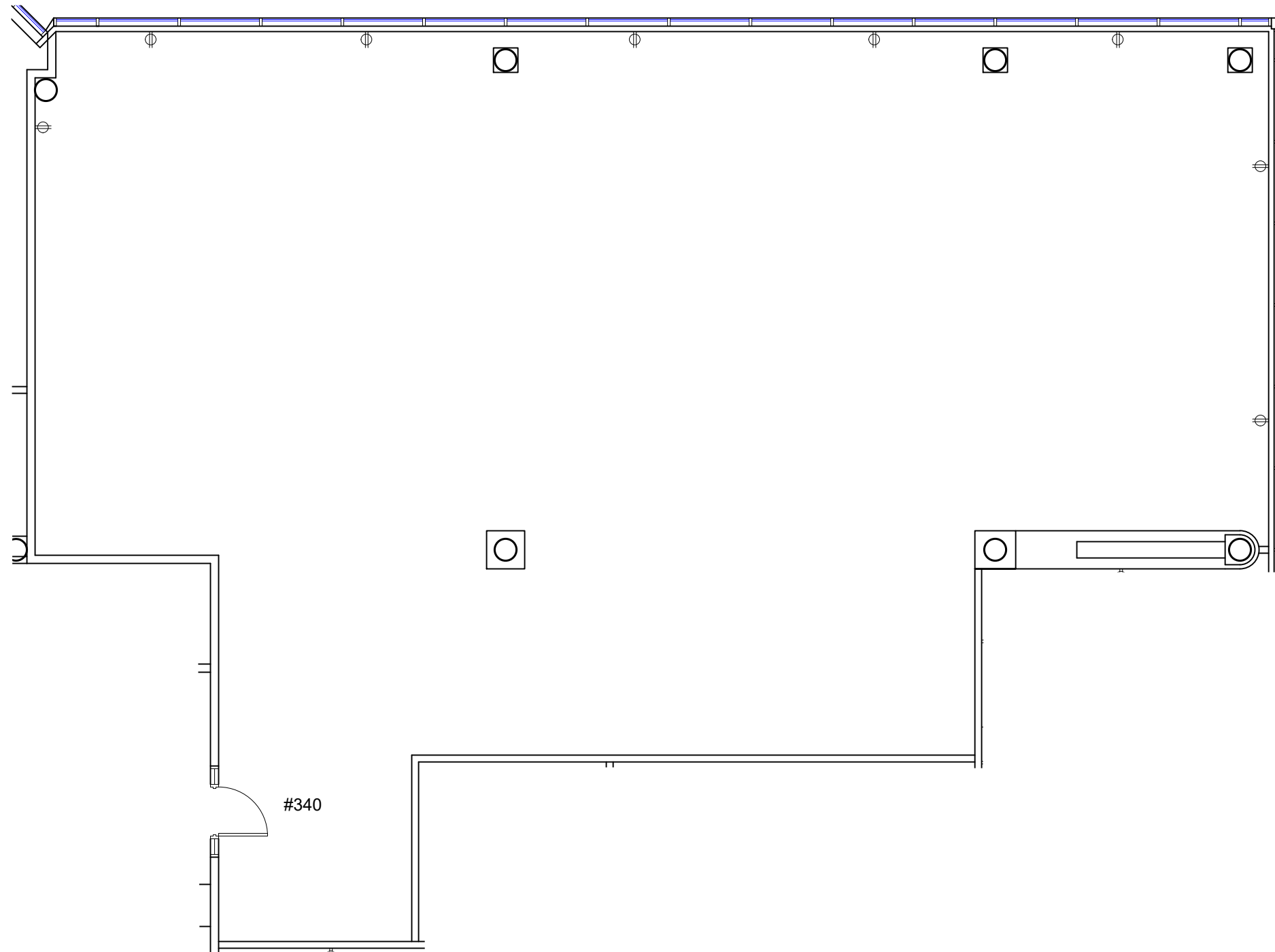
TRANS-CANADA
Plan Clé/
Key Plan

no.	révision/issue	date

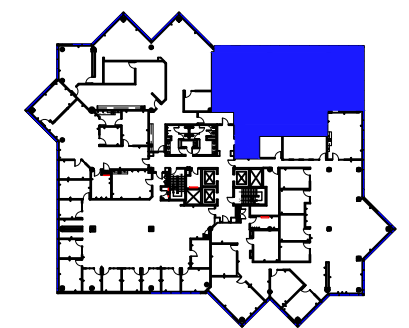
Titre/Title :
Troisième Etage/Third Floor

Échelle/Scale: N.T.S.		 OLYMBEC 333 Décarie 5th floor, St. Laurent Quebec H4N 3M9 Tel: (514) 344-3334 WWW.OLYMBEC.COM
Dessiné par/ Drawn By:		
Date:		
Nom et Localisation du Projet/ Project Name and Location: Trans-Canada 6505, Ville St. Laurent, Qc		
Suite/Room #		#320

*Veuillez noter que les dimensions indiquées sont approximatives et peuvent changer sans avis/ Note That All Dimensions Are Approximate and subject to change without notice



Legende/ Legend:



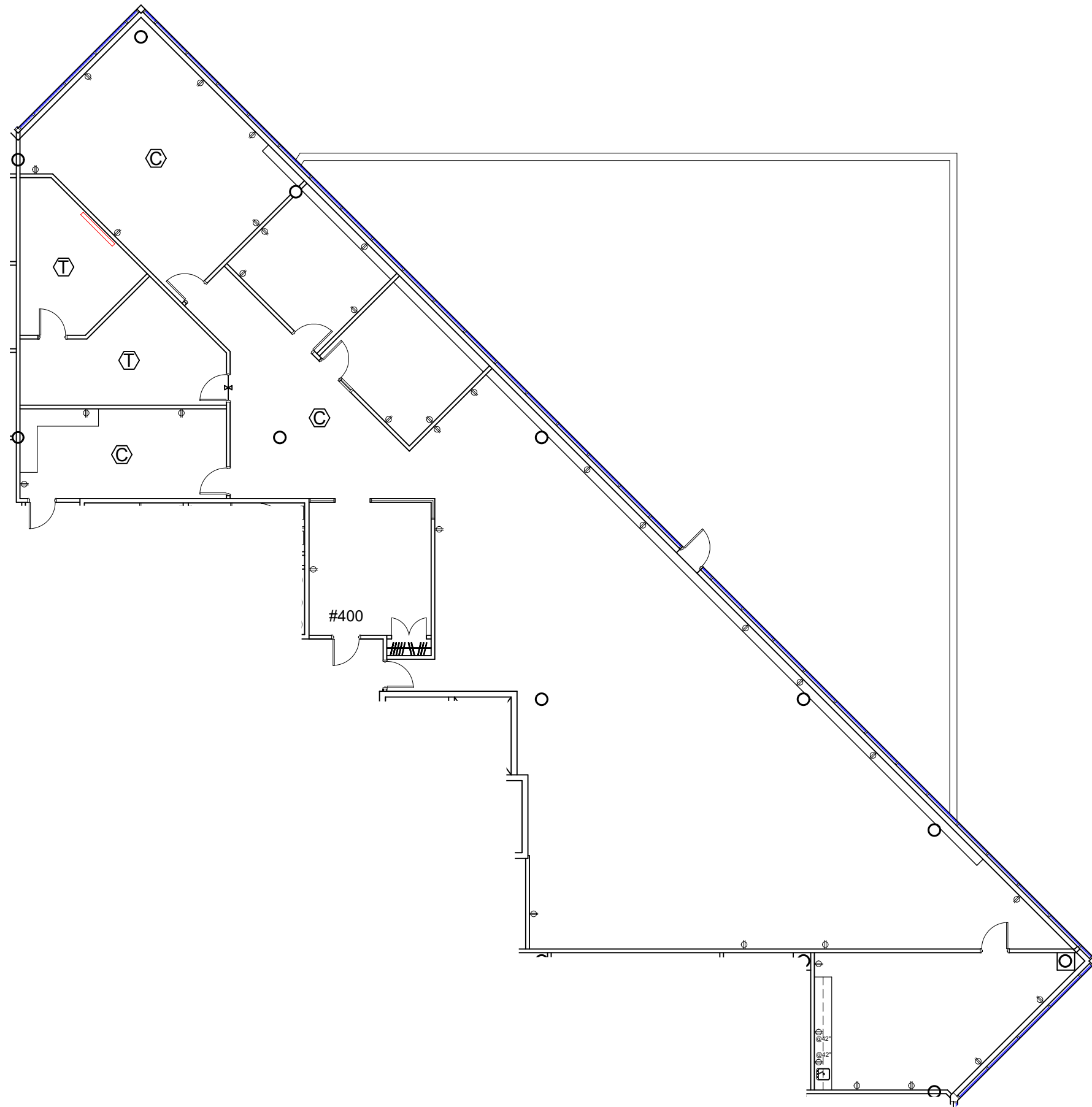
TRANS-CANADA
Plan Clé/
Key Plan

no.	révision/issue	date

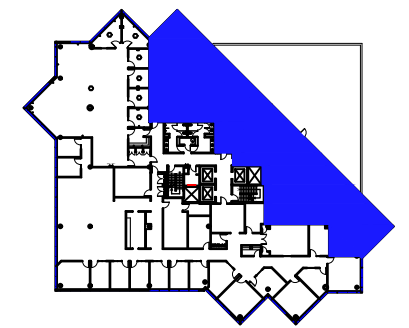
Titre/Title :
Troisième Etage/Third Floor

Échelle/Scale: N.T.S.	<p>OLYMBEC 333 Décarie 5th floor, St. Laurent Quebec H4N 3M9 Tel: (514) 344-3334 WWW.OLYMBEC.COM</p>
Dessiné par/ Drawn By:	
Date:	
Nom et Localisation du Projet/ Project Name and Location: Trans-Canada 6505, Ville St. Laurent, Qc	
Suite/Room # #340	

*Veuillez noter que les dimensions indiquées sont approximatives et peuvent changer sans avis/ Note That All Dimensions Are Approximate and subject to change without notice



Legende/ Legend:



TRANS-CANADA
Plan Clé/
Key Plan

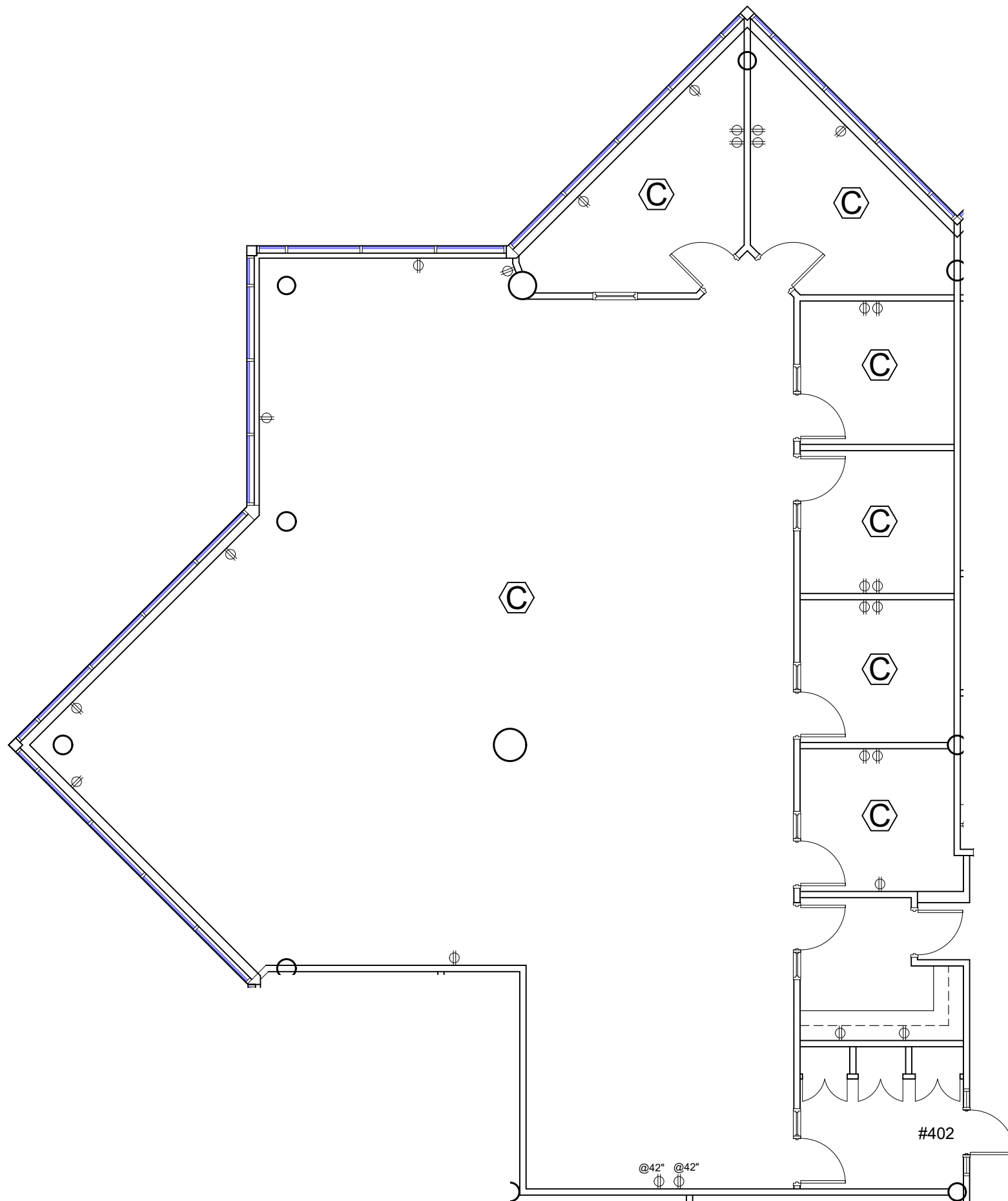
no.	révision/issue	date

Titre/Title :
4IEME Etage/4TH Floor

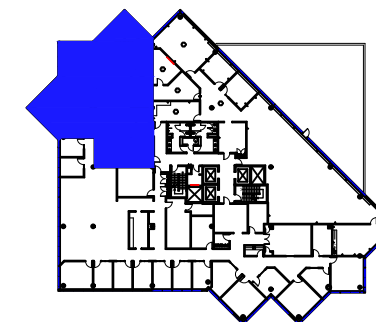
Échelle/Scale: N.T.S.
 Dessiné par/ Drawn By:
 Date:
 Nom et Localisation du Projet/
 Project Name and Location:
**Trans-Canada 6505,
 Ville St. Laurent, Qc**
 Suite/Room #
#400



*Veuillez noter que les dimensions indiquées sont approximatives et peuvent changer sans avis/ Note That All Dimensions Are Approximate and subject to change without notice



Legende/ Legend:



TRANS-CANADA
Plan Clé/
Key Plan

no.	révision/issue	date

Titre/Title :
4IEME Etage/4TH Floor

Échelle/Scale: N.T.S.
Dessiné par/ Drawn By:

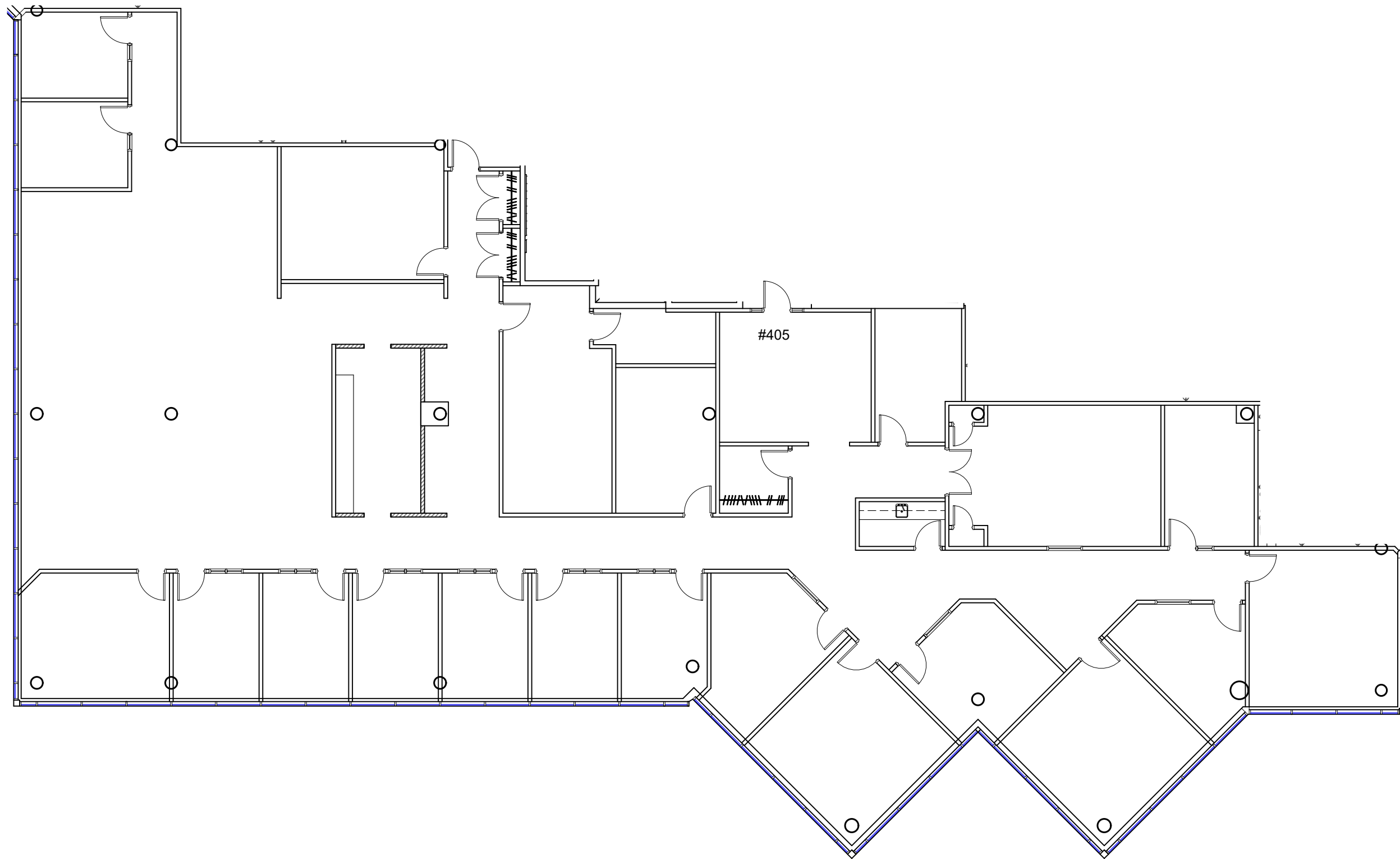
Date:

Nom et Localisation du Projet/
Project Name and Location:
**Trans-Canada 6505,
Ville St. Laurent, Qc**

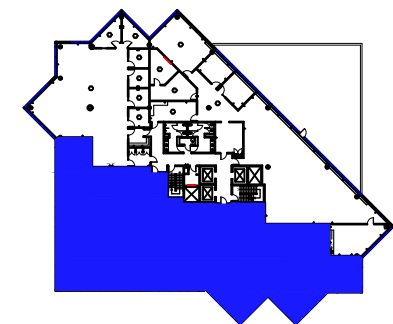
Suite/Room #
#402



*Veuillez noter que les dimensions indiquées sont approximatives et peuvent changer sans avis/ Note That All Dimensions Are Approximate and subject to change without notice



Legende/ Legend:



TRANS-CANADA
Plan Clé/
Key Plan

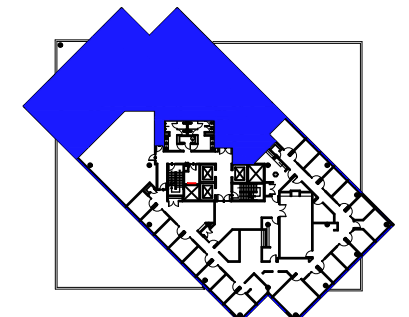
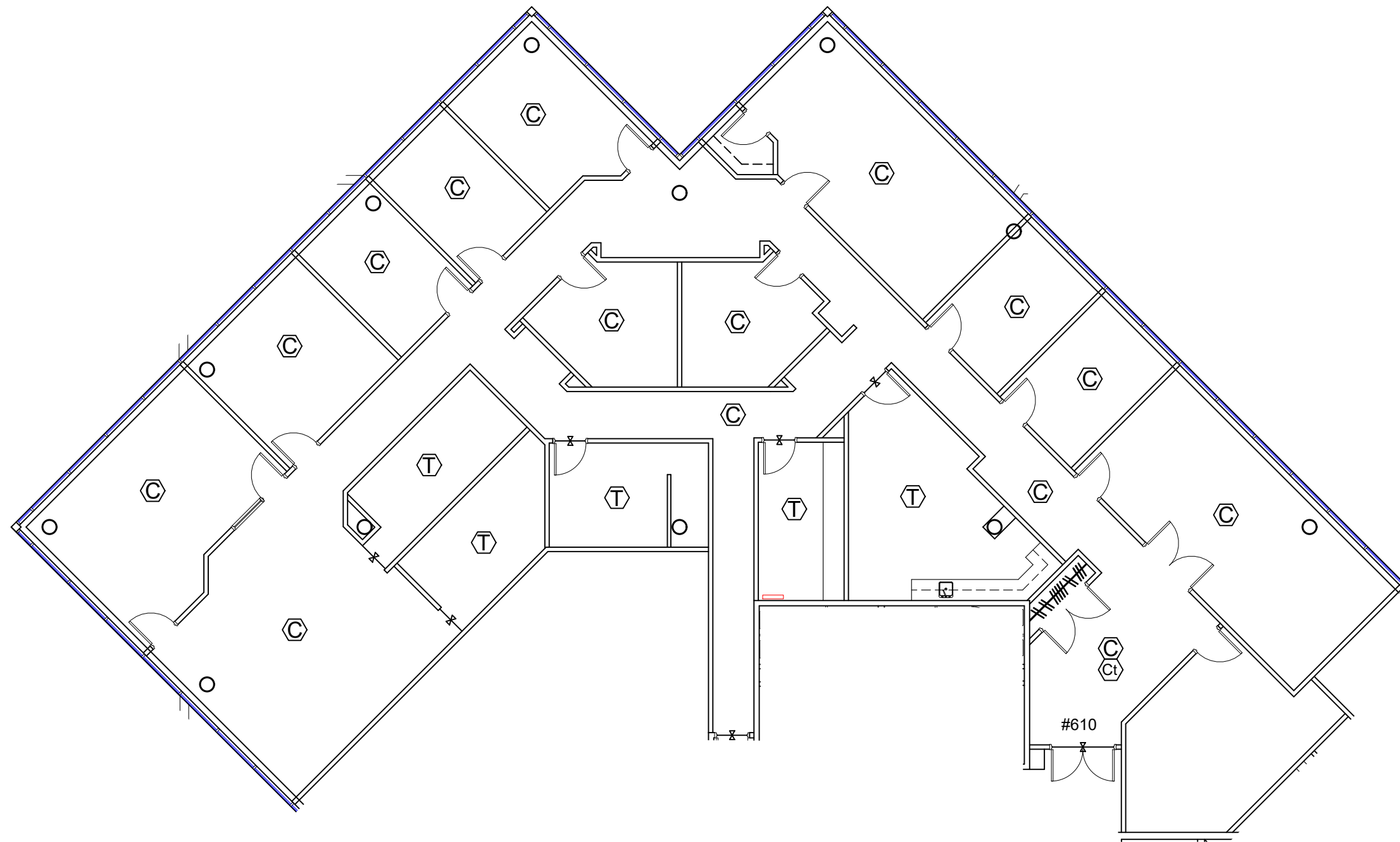
no.	révision/issue	date

Titre/Title :
4IEME Etage/4TH Floor

Échelle/Scale: N.T.S.		 OLYMBEC 333 Décarie 5th floor, St. Laurent Quebec H4N 3M9 Tel: (514) 344-3334 WWW.OLYMBEC.COM
Date:		
Dessiné par/ Drawn By: Nom et Localisation du Projet/ Project Name and Location: Trans-Canada 6505, Ville St. Laurent, Qc		
Suite/Room #		#405

*Veuillez noter que les dimensions indiquées sont approximatives et peuvent changer sans avis/ Note That All Dimensions Are Approximate and subject to change without notice

Legende/ Legend:



TRANS-CANADA
 Plan Clé/
 Key Plan

no.	révision/issue	date

Titre/Title :
 6IEME Etage/6TH Floor

Échelle/Scale: N.T.S.
 Dessiné par/ Drawn By:
 Date:
 Nom et Localisation du Projet/
 Project Name and Location:
**Trans-Canada 6505,
 Ville St. Laurent, Qc**
 Suite/Room #
#610



*Veuillez noter que les dimensions indiquées sont approximatives et peuvent changer sans avis/ Note That All Dimensions Are Approximate and subject to change without notice