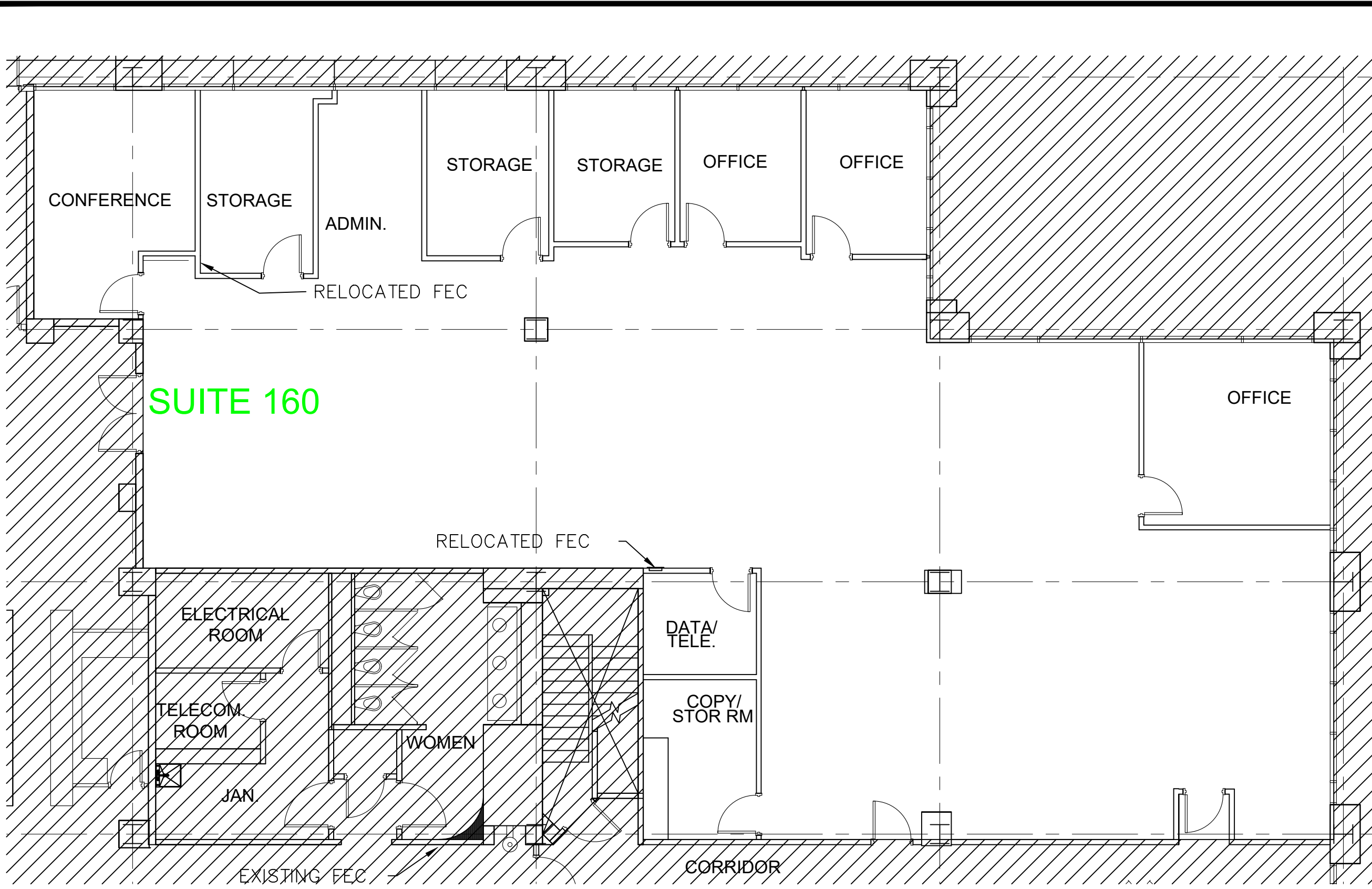
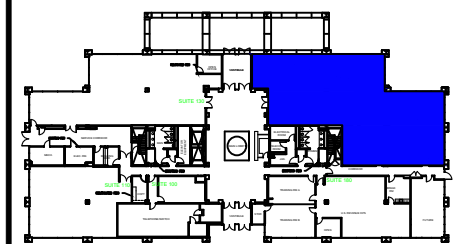


G:\Cad Files\Corporate Avenue 2003 Corporate Plaza, Memphis, TN\2003 - Building - Olymbec.dwg, 3/25/2016 10:10:28 AM, Icarisole, Olymbec, Olymbec



Legend:



KEY PLAN
1st Ground Floor

| no. | issue | date |
|-----|-------|------|
| | | |
| | | |
| | | |
| | | |
| | | |
| | | |
| | | |
| | | |
| | | |
| | | |

Title: **First Floor**

Scale: N.T.S.
Drawn By:

Date: 02-26-2016

Project Name and Location:

**2003 Corporate Avenue
Memphis, TN 38132**

Suite/Room #
160



Suite #160
 SCALE: 1/8" = 1'-0"
 (11 x 17 PAPER)

4,946 RSF

*Note That All Dimensions Are Approximate and subject to change without notice