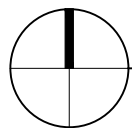
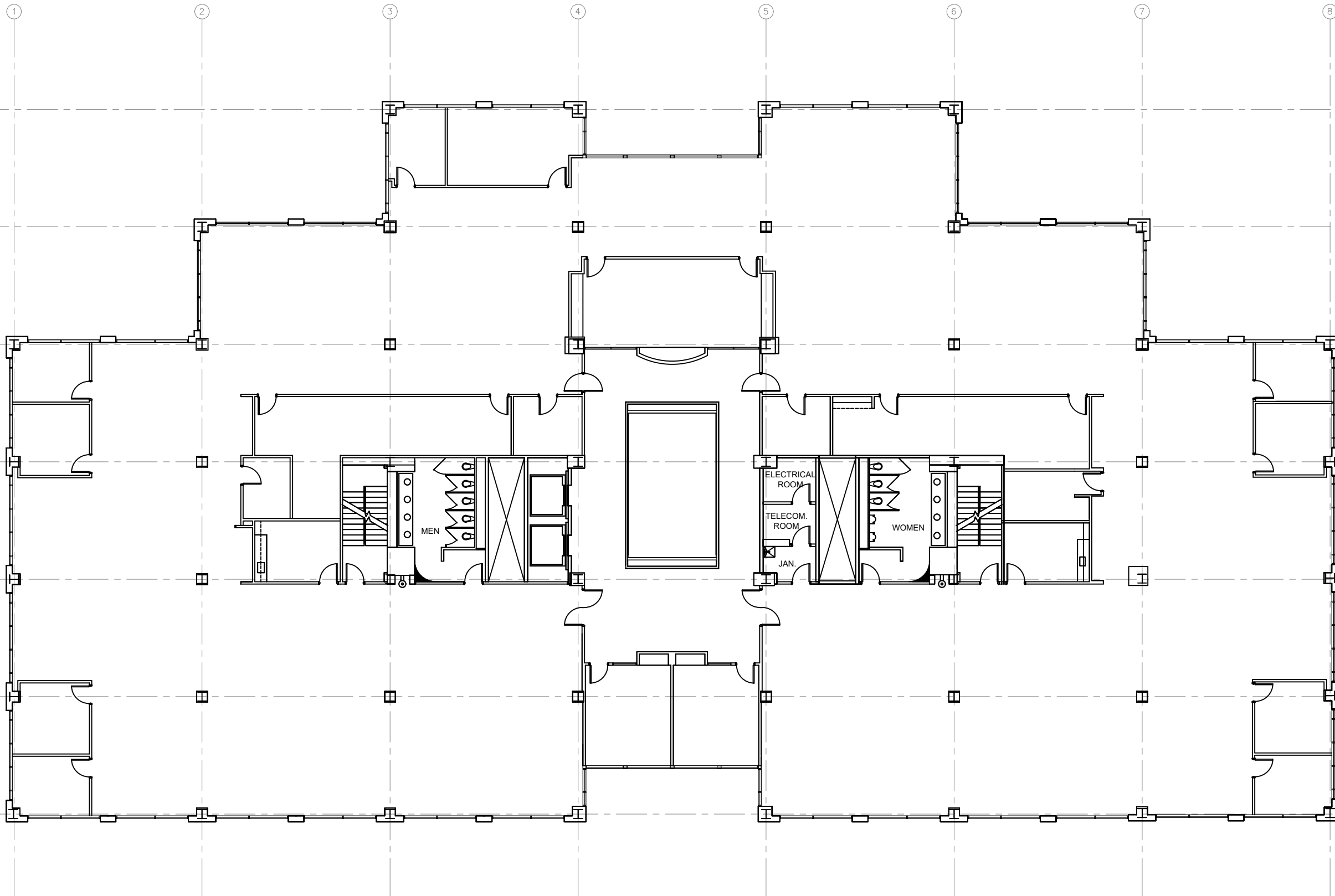


G:\Cad Files\Corporate Avenue 2003 Corporate Plaza, Memphis, TN\2003 - Corporate Ave.dwg, 6/10/2022 8:14:51 AM, Icarisole, Olymbec, Olymbec



SECOND FLOOR PLAN

SCALE: NTS (11X17)

21,871 RSF

Legend:

no.	issue	date

Title:
Second Floor Plan

Scale: N.T.S.

Drawn By:

Date: 02-26-2016

Project Name and Location:
**2003 Corporate Avenue
Memphis, TN 38132**

Suite/Room #



1004 East Brooks Road
Memphis, TN 38119
Tel: 1-888-OLYMBEC
WWW.OLYMBEC.COM

*Note That All Dimensions Are Approximate and subject to change without notice