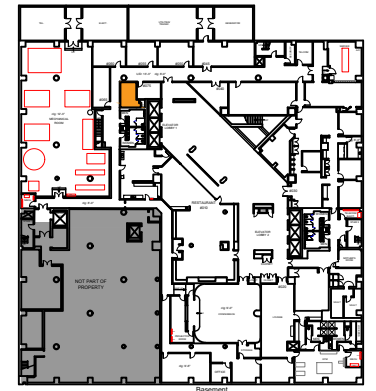


**Suite #070**  
 SCALE: 3/8" = 1'-0"  
 (11'x17')

**177 RSF**

Legend:



**KEY PLAN**

no.	issue	date

Title: **BASEMENT PLAN**

Scale: N.T.S.  
 Drawn By: \_\_\_\_\_  
 Date: \_\_\_\_\_

Project Name and Location:  
**6 NORTH MAIN STREET  
 DAYTON, OHIO**

Suite/Room #  
**#070**



1012 East Brooks Road  
 Memphis, TN 38116  
 Tel: 1-888-OLYMBEC  
 WWW.OLYMBEC.COM

\*Note That All Dimensions Are Approximate and subject to change without notice