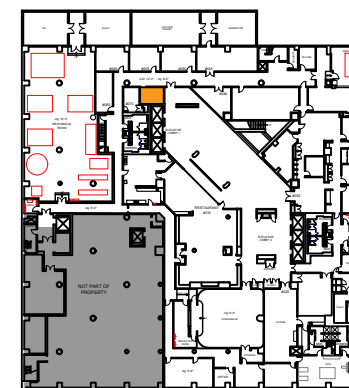


Suite #075
 SCALE: 3/8" = 1'-0"
 (11"x17")

170 RSF

Legend:



KEY PLAN

no.	issue	date

Title:
BASEMENT PLAN

Scale: N.T.S.
 Drawn By:
 Date:

Project Name and Location:
**6 NORTH MAIN STREET
 DAYTON, OHIO**

Suite/Room #
#075



1012 East Brooks Road
 Memphis, TN 38116
 Tel: 1-888-OLYMBEC
 WWW.OLYMBEC.COM

*Note That All Dimensions Are Approximate and subject to change without notice