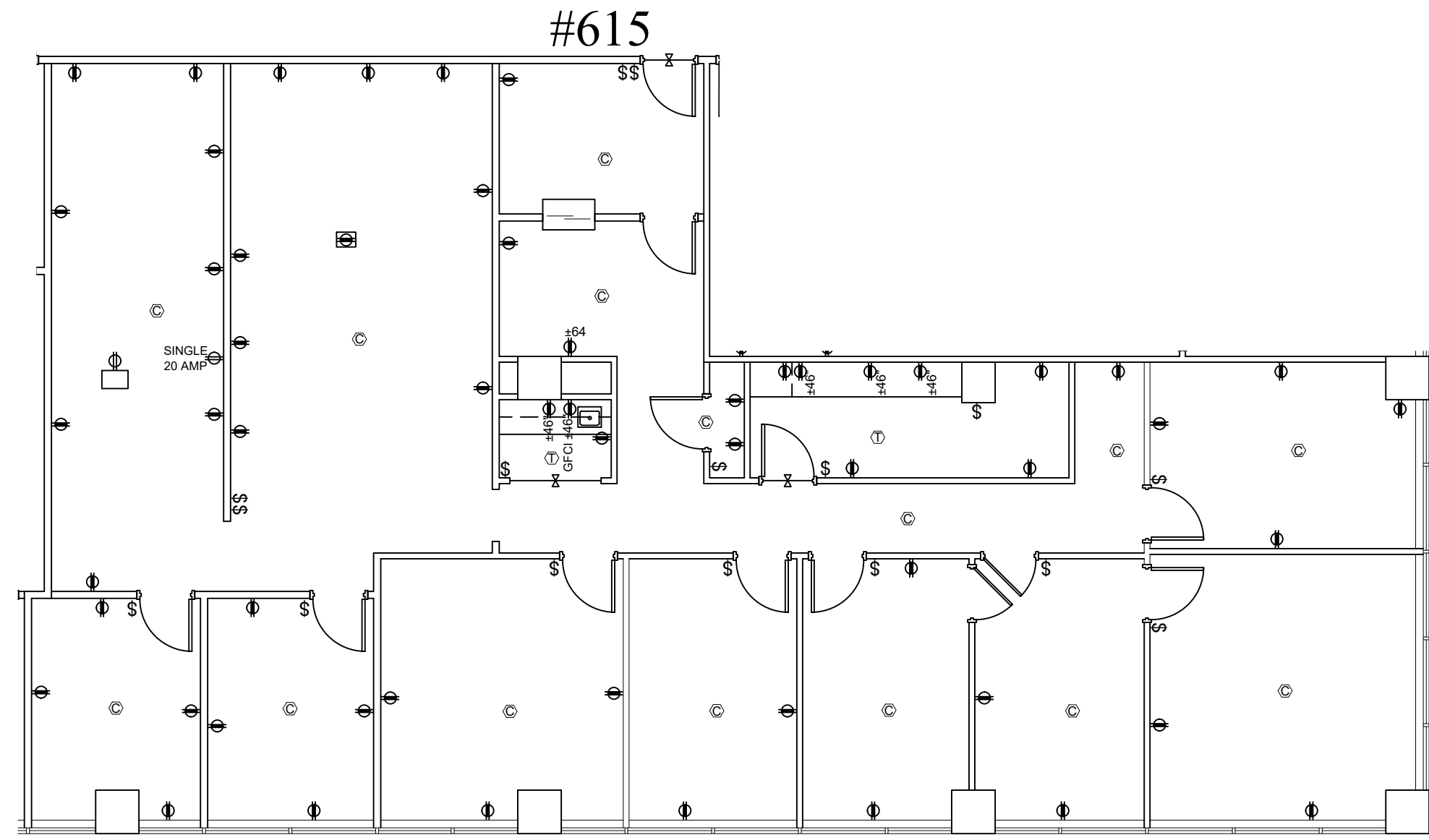
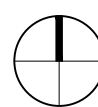


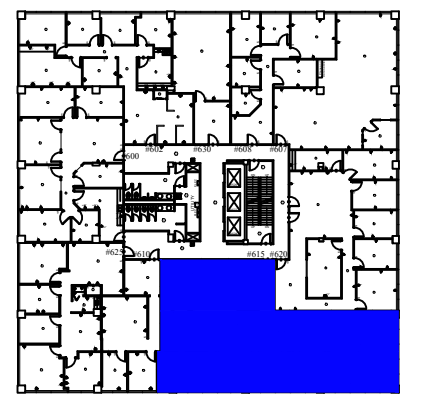
G:\Cad Files\Kermit Drive 1101 Nashville, TN\Kermit Drive 1101 - The Oaks Tower.dwg, 1/4/2024 9:31:22 AM, kcarlists, Olymbec, Olymbec




**#615**  
 SCALE: 1/8" = 1'-0"  
 (11x17)

**3,242 RSF**

Legend:



| no. | issue | date |
|-----|-------|------|
|     |       |      |
|     |       |      |
|     |       |      |
|     |       |      |
|     |       |      |
|     |       |      |
|     |       |      |
|     |       |      |
|     |       |      |

Title:  
**Floor Plan**


Scale: 1/8" - 1'-0"

Drawn By:

Date:

Project Name and Location:  
**1101 Kermit Drive  
 Nashville, TN 37217**

Suite/Room #  
**Suite #615**



OLYMBEC  
USA

1004 East Brooks Road  
 Memphis, TN 38116  
 Tel: 1-888-OLYMBEC  
 WWW.OLYMBEC.COM

\*Note That All Dimensions Are Approximate and subject to change without notice